

Sweet Citrus Birthday Card

Project Sheet - Jan 19 2023

Carol Buckalew

inkybeestampers@gmail.com

<https://www.inkybeestampers.com>



The **Sweet Citrus Stamp Set**, **Sweet Citrus Dies** and the **Sweet Citrus Hybrid Embossing Folder** along with a Mango Melody pattern from the **Dandy Designs 12" x 12" Designer Series Paper** pack were used to create this fun tone-on-tone birthday card!

1. Card Cuts:

- Card Base - Cut 1 Pumpkin Pie cardstock to 11" x 4-1/4", score at 5-1/2"
- DSP Panels - Cut 2 Mango Melody square pattern from the Dandy Designs Designer Series Paper to 5" x 3-3/4"
- White Panels - Cut 2 Basic White cardstock to 4-3/4" x 3-1/2"
- Scrap of Basic White measuring approximately 4-1/2" x 3-3/4" for stamping and die cutting fruit images.
- Scrap of Garden Green cardstock measuring approximately 2" x 3-1/2" for stamping and die cutting two (2) leaf images.
- Envelope Flap - Cut 1 coordinating DSP to 6" x 2-1/2"

Note About Large Citrus Stamp: Because I wanted to create a stamped background with oranges, rather than lemons or limes, I chose to cut the large citrus stamp apart. I used scissors

Sweet Citrus Birthday Card

Project Sheet - Jan 19 2023

Carol Buckalew

inkybeestampers@gmail.com

<https://www.inkybeestampers.com>

to cut the full image of the lemon away from the rest of the stamp, but I left the pieces of the stamp connecting the images together intact. This way, if I want to use the full image in the future, the pieces can be put back together on a stamp block without affecting how the image stamps.

2. On one of the white panels, stamp the fruit images all over the panel, equally distributing the images across the panel. I wanted the background stamping to be a little lighter than the fruit images that were later placed on top of this panel, so I used second generation stamping. Using the large outline stamp, stamp the outlines in full strength Mango Melody ink and stamp the centers of the fruit in second generation Mango Melody. *Second generation stamping means that you will ink up the stamp, stamp off once on a piece of scrap paper, then stamp onto your project without reinking the stamp.*
3. Stamp the sentiment "Sending you a big squeeze" onto the sentiment label in Mango Melody ink.
4. On the inside white panel, stamp the sentiment "Have a zesty birthday!" in Mango Melody Ink. Stamp the fruit outline on the lower left of this panel in Mango Melody ink, then second generation stamp the inside of the fruit in Mango Melody ink. Using the leaf image, stamp leaves next to the stamped orange slice. **Note: I stamped the full orange slice and inked up only that portion of the stamps when stamping.**
5. Stamp the same images as above in Step #4 on the lower left of the envelope front.
6. On a scrap of Garden Green cardstock, stamp the leaf image using Garden Green ink. Use the coordinating die from the Sweet Citrus Dies to cut out. Set aside for now.
7. On a piece of Basic White cardstock measuring approximately 4-1/2" x 3-3/4" stamp the large fruit stamp. Stamp the outline of the fruit in Pumpkin Pie ink and stamp the insides of the fruit in Mango Melody ink. Place the large die from the Sweet Citrus Dies set into the Sweet Citrus Hybrid Embossing folder. The die will fit snugly into the embossing folder over the four fruit images in the center of the embossing folder. Place the stamped panel into the embossing folder and line up with the die, then cut out the images. The hybrid embossing folder will emboss and die cut at the same time. Set the die cut orange slices aside for now.



Sweet Citrus Birthday Card

Project Sheet - Jan 19 2023

Carol Buckalew

inkybeestampers@gmail.com

<https://www.inkybeestampers.com>

8. Adhere one of the DSP panels on the card front at an angle. I chose the Mango Melody square pattern from the Dandy Designs Designer Series Paper.
9. On the white stamped panel, wrap Pumpkin Pie twine around the panel twice and secure the ends on the back of the panel using a small amount of Stampin' Seal. Adhere the panel over top of the DSP panel on the card front using Stampin' Dimensionals. Position so that there is an equal distance between the panel edges and the card edges.
10. Partially adhere the die cut half orange to the die cut orange slice so that they are slightly overlapping. Adhere the oranges just above the wrapped twine and center from left to right.
11. Apply half Stampin' Dimensionals above and below the twine, positioning them to the right side of the card front. Use a double stack of Dimensionals on the very right edge of the sentiment label. Adhere the sentiment label to the card front, positioning it so that it is to the right and centered over the wrapped twine.
12. Adhere the leaves under the oranges, tucking the stems under the leaves.
13. Adhere several Brushed Brass Butterflies to the card front.
14. Adhere the second DSP panel to the inside of the card at an angle like you did for the card front. Adhere the inside white panel to the inside of the card.



Sweet Citrus Birthday Card

Project Sheet - Jan 19 2023

Carol Buckalew

inkybeestampers@gmail.com

<https://www.inkybeestampers.com>

15. Adhere the piece of coordinating DSP to the envelope flap and trim the excess paper away from the flap.



The card is complete! You can earn the Dandy Designs 12" x 12" Designer Series Paper by placing a qualifying order during Sale-A-Bration!

Products used to create this card are included on the next page.

Sweet Citrus Birthday Card

Project Sheet - Jan 19 2023

Carol Buckalew

inkybeestampers@gmail.com

<https://www.inkybeestampers.com>



Sweet Citrus Bundle (English) - 160645

Price: \$49.50

Add to Cart



Dandy Designs 12" X 12" (30.5 X 30.5 Cm) Designer Series Paper - 160836

Price: \$0.00

Add to Cart



Three Twine Combo Pack - 160597

Price: \$7.50

Add to Cart



Brushed Brass Butterflies - 158136

Price: \$10.00

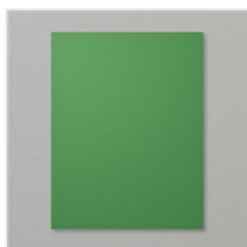
Add to Cart



Pumpkin Pie 8-1/2" X 11" Cardstock - 105117

Price: \$9.25

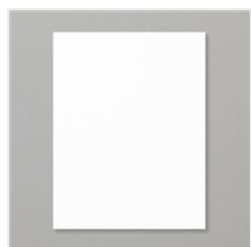
Add to Cart



Garden Green 8-1/2" X 11" Cardstock - 102584

Price: \$9.25

Add to Cart



Basic White 8-1/2" X 11" Cardstock - 159276

Price: \$10.25

Add to Cart



Basic White Medium Envelopes - 159236

Price: \$7.50

Add to Cart



Pumpkin Pie Classic Stampin' Pad - 147086

Price: \$8.00

Add to Cart



Mango Melody Classic Stampin' Pad - 147093

Price: \$8.00

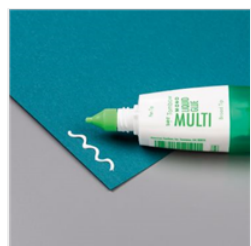
Add to Cart



Garden Green Classic Stampin' Pad - 147089

Price: \$8.00

Add to Cart



Multipurpose Liquid Glue - 110755

Price: \$4.00

Add to Cart



Stampin' Dimensionals - 104430

Price: \$4.25

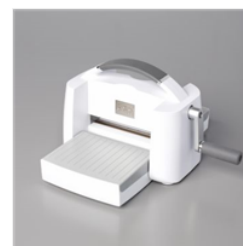
Add to Cart



Paper Trimmer - 152392

Price: \$25.00

Add to Cart



Stampin' Cut & Emboss Machine - 149653

Price: \$125.00

Add to Cart