

# Sentimental Park Congratulations Card

Project Sheet - Jan 13 2023

Carol Buckalew

[inkybeestampers@gmail.com](mailto:inkybeestampers@gmail.com)

<https://www.inkybeestampers.com>



Today's congratulations card uses the Sentimental Park Bundle and the beautiful Regency Park 6" x 6" Designer Series Paper. The sentiment label on this card is extra special and I'll show you the exact dies I used to create this label - the outer label sits nestled into the label behind it! Let's get started!

## 1. Card Cuts:

- Card Base - Cut 1 Balmy Blue cardstock to 11" x 4-1/4", score at 5-1/2"
- DSP Panel - Cut 1 Night of Navy/Balmy Blue flower print paper from the Regency Park Designer Series Paper pack to 5-3/8" x 4-1/8"
- DSP Banner - Cut 1 Mango Melody print from the Regency Park Designer Series Paper to 4" x 2-1/4"
- Large, Ornate Sentiment Label - Cut 1 Basic White cardstock to approximately 4-1/4" x 2-1/2"
- Outer Sentiment Label - Cut 1 Basic White cardstock to approximately 3-1/4" x 2"
- Scraps of Basic White, Balmy Blue and Mango Melody cardstock to die cut decorative flowers

# Sentimental Park Congratulations Card

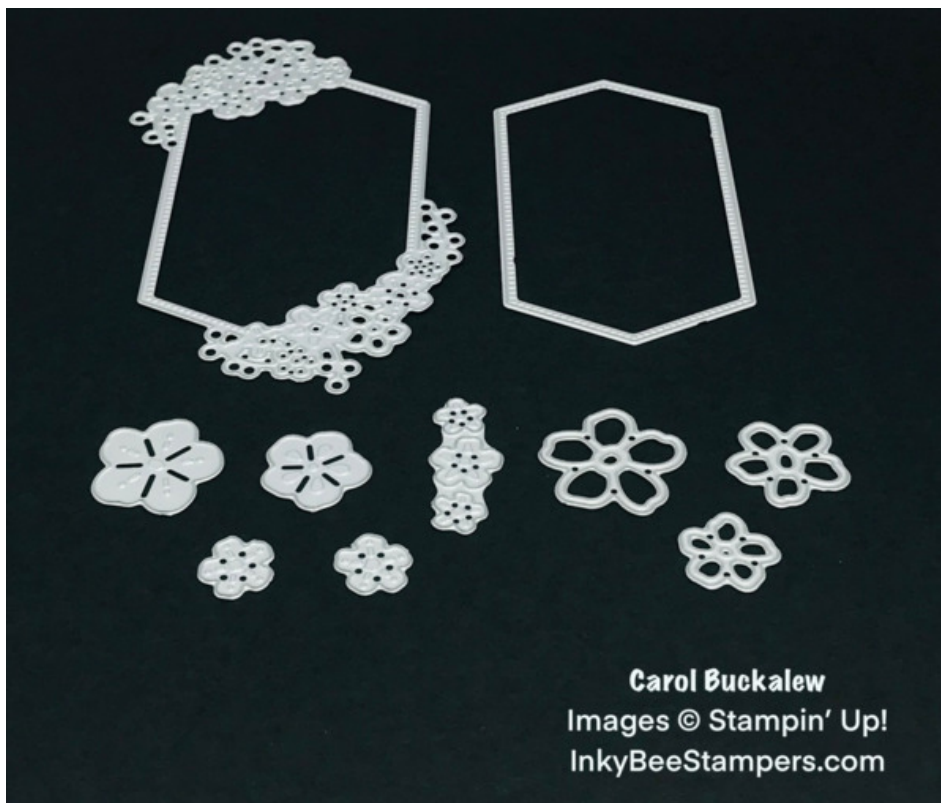
Carol Buckalew

[inkybeestampers@gmail.com](mailto:inkybeestampers@gmail.com)

<https://www.inkybeestampers.com>

## Project Sheet - Jan 13 2023

- Inside Mat - Cut 1 Mango Melody cardstock to 5-3/8" x 4-1/8"
  - Inside Panel - Cut 1 Basic White cardstock to 5-1/4" x 4"
  - Envelope Flap - Cut 1 coordinating DSP to 6" x 2-1/2"
2. Start off by adhering the DSP Panel to the card front.
  3. For the DSP Banner, cut a banner end on one of the short sides of the paper. Using a small pair of paper snips, cut up the center a 1/2", then cut from each corner to the 1/2" cut mark to create the banner. Adhere the straight edge of this banner piece to the card front, lining up the top of the banner with the top of the previously applied DSP panel and approximately a 1/2" from the left edge of the card.
  4. Stamp the sentiment "Let's Celebrate" from the Sentimental Park Stamp Set in Mango Melody ink onto the white outer sentiment label. Adhere this sentiment label to the larger ornate sentiment label. The ornate label has die cut flowers that create an open slot on the left and right. The smaller sentiment label slips into these open slots on the larger label. Use a small amount of Stampin' Seal or liquid glue to hold the smaller label in place. Refer to the image below for dies used.



5. Die cut a variety of flowers, both open and solid images, using scraps of Basic White, Mango Melody and Balmy Blue. You can stack smaller flowers onto larger flowers, which is what I did for this card. In some instances, I used just single flowers. Glue up all flowers that you're going to stack. Adhere several stacked flowers and several smaller solid flowers directly to the ornate sentiment label. Adhere the sentiment label unit to the card front using

# Sentimental Park Congratulations Card

Project Sheet - Jan 13 2023

Carol Buckalew

[inkybeestampers@gmail.com](mailto:inkybeestampers@gmail.com)

<https://www.inkybeestampers.com>

Stampin' Dimensionals. Position the sentiment label towards the top of the card and over the DSP banner. Tuck a few remaining die cut flowers around the sentiment label, tucking them slightly under the label.

6. Cut a 2-1/2" piece of Night of Navy Bordered Ribbon and fold it in half, separating the two halves slightly. Use a Mini Glue Dot to hold the folded ribbon together. Use an additional Mini Glue Dot on the back side of the ribbon and slip the ribbon under the sentiment label towards the bottom left, allowing the ribbon ends to hang down.
7. On the inside panel, stamp the sentiment "Your new adventure" in Mango Melody ink. Using the two-step multiple flower stamps, first stamp the outline image onto the bottom of the panel. Use the filler stamp to second-generation stamp over the outline image. Use these two stamps to also stamp flowers onto the envelope front.



8. Adhere the coordinating piece of DSP to the envelope flap. Trim the excess paper away from the flap to finish off the envelope.
9. Adhere several Adhesive-backed Milky Dots in blue onto several of the flower centers on the card front.

# Sentimental Park Congratulations Card

Project Sheet - Jan 13 2023

Carol Buckalew

[inkybeestampers@gmail.com](mailto:inkybeestampers@gmail.com)

<https://www.inkybeestampers.com>



This completes the card! I love that the flower print on the Regency Park Designer Series Paper is so bold and cheerful, and the die cut matching flowers are the perfect decoration!

Products used to create today's card are included on the next page.

# Sentimental Park Congratulations Card

Carol Buckalew

[inkybeestampers@gmail.com](mailto:inkybeestampers@gmail.com)

<https://www.inkybeestampers.com>

## Project Sheet - Jan 13 2023



Sentimental Park Bundle (English) - 160567

Price: \$52.00

Add to Cart



Regency Park 6" X 6" (15.2 X 15.2 Cm) Designer Series Paper - 160559

Price: \$12.00

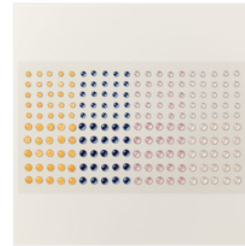
Add to Cart



Night Of Navy 3/8" (1 Cm) Bordered Ribbon - 160581

Price: \$9.00

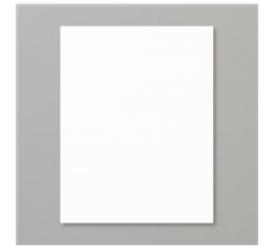
Add to Cart



Adhesive-Backed Milky Dots - 160582

Price: \$8.00

Add to Cart



Basic White 8-1/2" X 11" Cardstock - 159276

Price: \$10.25

Add to Cart



Mango Melody 8-1/2" X 11" Cardstock - 146989

Price: \$9.25

Add to Cart



Balmy Blue 8-1/2" X 11" Cardstock - 146982

Price: \$9.25

Add to Cart



Mango Melody Classic Stampin' Pad - 147093

Price: \$8.00

Add to Cart



Mini Glue Dots - 103683

Price: \$5.25

Add to Cart



Stampin' Dimensionals - 104430

Price: \$4.25

Add to Cart



Multipurpose Liquid Glue - 110755

Price: \$4.00

Add to Cart



Paper Snips Scissors - 103579

Price: \$11.00

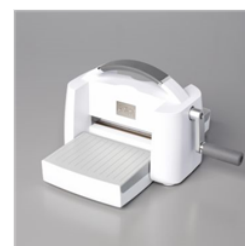
Add to Cart



Paper Trimmer - 152392

Price: \$25.00

Add to Cart



Stampin' Cut & Emboss Machine - 149653

Price: \$125.00

Add to Cart