

Warm Welcome Card for Baby

Project Sheet - Nov 18 2022

Carol Buckalew

inkybeestampers@gmail.com

<https://www.inkybeestampers.com>



This card was created using the **Warm Welcome Stamp Set**, **Warm Welcome Dies** and the **Brick & Mortar 3D Embossing Folder** along with some pretty paper from the **Tea Boutique 6 x 6 Designer Series Paper** pack for a quick and easy card for baby.

1. Card Cuts:

- Card Base - Cut 1 Balmy Blue cardstock to 8-1/2" x 5-1/2", score at 4-1/4"
- Panel - Cut 1 Basic White cardstock to 5-1/4" x 4"
- Door Die Cut - Cut 1 Basic White cardstock to 3-3/4" x 3" for die stamping and die cutting
- Shoes Die Cut - Use a scrap of Basic White cardstock measuring approximately 1-3/4" x 3/4" for stamping and die cutting shoe image
- Sentiment Label - Cut 1 Basic White cardstock to 1-7/8" x 1" for stamping and die cutting
- DSP Panel - Cut 1 Tahitian Tide polka dot print from the Tea Boutique 6" x 6" Designer Series Paper to 3" x 1-1/2" for die cutting door opening
- Inside Panel - Cut 1 Basic White cardstock to 5-1/4" x 4"
- Envelope Flap - Cut 1 coordinating DSP to 6" x 2-1/2"

Warm Welcome Card for Baby

Project Sheet - Nov 18 2022

Carol Buckalew

inkybeestampers@gmail.com

<https://www.inkybeestampers.com>

2. Emboss the white panel using the Brick & Mortar 3D Embossing Folder. Lightly blend Smoky Slate ink across the embossed surface to highlight some of the bricks. Adhere the embossed panel to the front of the card base.
3. Stamp the open-door image onto a piece of Basic White cardstock using Smoky Slate ink and die cut. Use the light shade of a Smoky Slate Stampin' Blend and add shadows to the left and bottom of each door panel then use a Stampin' Blend Color Lifter to soften the shadows.
4. Using the Tahitian Tide print paper from the Tea Boutique Designer Series Paper pack, die cut the door opening using the smaller door die from the Warm Welcome Dies set and adhere the panel to the door opening from step #3 above.
5. On a small scrap of Basic White cardstock, stamp the shoe image using Tuxedo Black Memento ink. Color the shoes using the light shades of Tahitian Tide, Balmy Blue and Polished Pink Stampin' Blends. Use the coordinating die from the Warm Welcome Dies set to die cut. Adhere the shoes to the bottom of the open doorway using Stampin' Dimensionals.
6. Adhere the door unit to the card front using Stampin' Dimensionals. Position the door to the lower portion of the card front in order to leave room at the top of the card for the sentiment label.
7. Die cut a doorknob using a small scrap of silver foil and adhere to the door.
8. Using the "It's your day" and "little one" sentiments from the Warm Welcome Stamp Set, stamp the sentiments onto a piece of Basic White cardstock using Tuxedo Black Memento ink. Use the small, stitched rectangle from the Warm Welcome Dies set to die cut. Adhere the sentiment label to the card front using Stampin' Dimensionals.
9. Stamp the sentiment "Yay" onto the inside panel then adhere the panel to the inside of the card.
10. Using two lengths of Tahitian Tide and White Baker's Twine from the 2022-2024 In Color Baker's Twine Pack and tie a double bow. Adhere the bow to the top of the door using a Mini Glue Dot.
11. Adhere the piece of coordinating DSP to the envelope flap and trim around the flap to finish off the envelope.

Warm Welcome Card for Baby

Project Sheet - Nov 18 2022

Carol Buckalew

inkybeestampers@gmail.com

<https://www.inkybeestampers.com>



This completes this quick, simple and cute card!

Warm Welcome Card for Baby

Project Sheet - Nov 18 2022

Carol Buckalew

inkybeestampers@gmail.com

<https://www.inkybeestampers.com>

Products used to create this card are included on the next page.

Warm Welcome Card for Baby

Project Sheet - Nov 18 2022

Carol Buckalew
inkybeestampers@gmail.com
<https://www.inkybeestampers.com>



Warm Welcome Bundle (English) - 160704

Price: \$50.25

Add to Cart



Brick & Mortar 3D Embossing Folder - 149643

Sale: \$8.00

Price: \$10.00

Add to Cart



Tea Boutique 6" X 6" (15.2 X 15.2 Cm) Designer Series Paper - 158659

Sale: \$9.60

Price: \$12.00

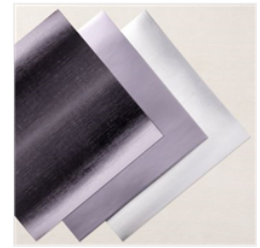
Add to Cart



2022-2024 In Color Baker's Twine Pack - 159195

Price: \$15.00

Add to Cart



Silver Foil 12" X 12" (30.5 X 30.5 Cm) Specialty Pack - 156457

Price: \$10.00

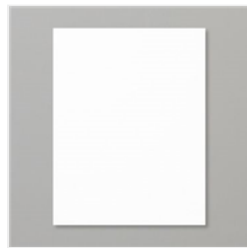
Add to Cart



Balmy Blue 8-1/2" X 11" Cardstock - 146982

Price: \$9.25

Add to Cart



Basic White 8-1/2" X 11" Cardstock - 159276

Price: \$10.25

Add to Cart



Basic White Medium Envelopes - 159236

Price: \$7.50

Add to Cart



Smoky Slate Classic Stampin' Pad - 147113

Price: \$8.00

Add to Cart



Tuxedo Black Memento Ink Pad - 132708

Price: \$6.00

Add to Cart



Smoky Slate Stampin' Blends Combo Pack - 154904

Price: \$9.00

Add to Cart



Balmy Blue Stampin' Blends Combo Pack - 154830

Price: \$9.00

Add to Cart



Tahitian Tide Stampin' Blends Combo Pack - 159221

Price: \$9.00

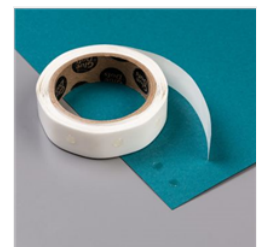
Add to Cart



Polished Pink Stampin' Blends Combo Pack - 155520

Price: \$9.00

Add to Cart



Mini Glue Dots - 103683

Price: \$5.25

Add to Cart

Warm Welcome Card for Baby

Project Sheet - Nov 18 2022

Carol Buckalew

inkybeestampers@gmail.com

<https://www.inkybeestampers.com>



Stampin'
Dimensionals -
104430

Price: \$4.25

Add to Cart



Multipurpose
Liquid Glue -
110755

Price: \$4.00

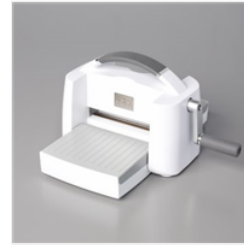
Add to Cart



Paper Trimmer -
152392

Price: \$25.00

Add to Cart



Stampin' Cut &
Emboss Machine -
149653

Price: \$125.00

Add to Cart