

Lights Aglow Holiday Card

Nov 11 2022

Carol Buckalew

inkybeestampers@gmail.com

<https://www.inkybeestampers.com>



Usually, I will highlight a stamp set when creating a card but today I'm highlighting the Lights Aglow 6" x 6" Specialty Designer Series Paper. This paper is so beautiful it can stand all on its own. I chose a book fold card base to show off this gorgeous, sparkly paper. After all, Christmas cards should have a little sparkle! The Brightest Glow Stamp Set was used for the sentiments.

1. Card Cuts:

- Card Base - Cut 1 Very Vanilla cardstock to 11" x 4-1/4". Score at 5-1/2" and 4-1/4"
- Outside Mats in Cherry Cobbler Cardstock
 - Cut 1 to 4-1/8" x 1-1/8"
 - Cut 1 to 4-1/8" x 4-1/8"
- DSP Panels in Black and Gold Star pattern from the Lights Aglow 6" x 6" Specialty Designer Series Paper
 - Cut 1 to 4" x 1"
 - Cut 1 to 4" x 4"
- DSP in Cherry Cobbler and Gold Square Star pattern - Cut 1 to approximately 2-7/8" x 2-7/8". Die cut using Stylish Shapes Dies square.
- Sentiment Label - Cut 1 Very Vanilla cardstock to approximately 2" x 2". Die cut using

Lights Aglow Holiday Card

Nov 11 2022

Carol Buckalew

inkybeestampers@gmail.com

<https://www.inkybeestampers.com>

Stylish Shapes Dies square.

- Inside Mat - Cut 1 Cherry Cobbler cardstock to 4-1/8" x 4-1/8"
 - Inside Panel - Cut 1 Very Vanilla cardstock to 4" x 4"
 - Envelope Flap - Cut 1 Black and Gold pattern Lights Aglow DSP to 6" x 2-1/2"
2. Use a bone folder to burnish the 4-1/4" and 5-1/2" score lines of the card base. The slender panel of the card base will be on the left and acts as the binding for this book fold card.
 3. Begin by adhering the Black and Gold DSP Panels to their Cherry Cobbler mats for the outside of the card, then adhere these units to the card front.
 4. Cut a length of Gold Shimmer Ribbon to approximately 5" long. Wrap the ribbon vertically across the small 1-1/4" section, or the binding part of the book fold, and secure the ends of the ribbon on the inside of the card using Stampin' Seal.
 5. Open the card base and adhere the narrow 1-1/4" section together with glue. Only apply glue to the narrow section and adhere this narrow front section to the right side of the inside of the card base.
 6. From a piece of Lights Aglow Specialty DSP in the Cherry Cobbler and Gold square pattern, use the largest square die from the Stylish Shapes Dies set to cut out a square.
 7. Die cut the sentiment label from Very Vanilla cardstock using the 3rd to largest square die from the Stylish Shapes Dies set. Using the sentiment "All is Merry & Bright" from the Brightest Glow Stamp Set, stamp the sentiment onto the sentiment label in Cherry Cobbler ink.
 8. Adhere the sentiment label to the Cherry Cobbler and Gold square from Step #6 above. Adhere this unit to the card front using Stampin' Dimensionals. Adhere the sentiment label to the square panel on the card front.
 9. On the inside panel, stamp the sentiment "May the peace of the season light your world & may your new year be the brightest" from the Brightest Glow Stamp Set in Cherry Cobbler ink. Adhere the inside panel to its Cherry Cobbler mat then adhere this unit to the inside of the card.
 10. Adhere the piece of coordinating Specialty DSP to the envelope flap and trim around the flap to finish the envelope.
 11. Tie a small bow using Gold Shimmer Ribbon and adhere the bow to the card front along the strip of ribbon previously adhered to the book binding portion of the card.

Lights Aglow Holiday Card

Nov 11 2022

Carol Buckalew

inkybeestampers@gmail.com

<https://www.inkybeestampers.com>



This completes the card! The Lights Aglow 6" x 6" Specialty Designer Series Paper makes for easy and quick cards and the book fold card base provides the perfect way to show off this beautiful Specialty DSP!

Products used to create this card are included on the next page.

Lights Aglow Holiday Card

Nov 11 2022

Carol Buckalew

inkybeestampers@gmail.com

<https://www.inkybeestampers.com>



Lights Aglow 6" X 6" (15.2 X 15.2 Cm) Specialty Designer Series Paper - 159535

Price: \$15.00

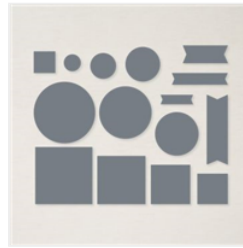
Add to Cart



Brightest Glow Cling Stamp Set (English) - 159542

Price: \$25.00

Add to Cart



Stylish Shapes Dies - 159183

Price: \$30.00

Add to Cart



Gold 1/4" (6.4 Mm) Shimmer Ribbon - 152156

Price: \$7.00

Add to Cart



Very Vanilla 8-1/2" X 11" Cardstock - 101650

Price: \$10.25

Add to Cart



Cherry Cobbler 8-1/2" X 11" Cardstock - 119685

Price: \$9.25

Add to Cart



Very Vanilla Medium Envelopes - 107300

Price: \$7.50

Add to Cart



Cherry Cobbler Classic Stampin' Pad - 147083

Price: \$8.00

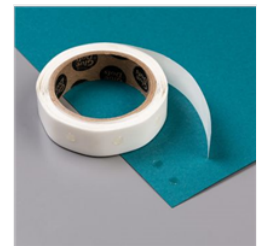
Add to Cart



Multipurpose Liquid Glue - 110755

Price: \$4.00

Add to Cart



Mini Glue Dots - 103683

Price: \$5.25

Add to Cart



Stampin' Dimensionals - 104430

Price: \$4.25

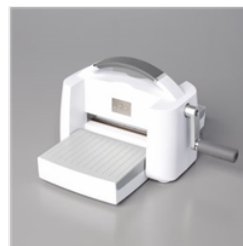
Add to Cart



Paper Trimmer - 152392

Price: \$25.00

Add to Cart



Stampin' Cut & Emboss Machine - 149653

Price: \$125.00

Add to Cart