

Celebrate With Tags Christmas Card

Project Sheet - Nov 29 2022

Carol Buckalew

inkybeestampers@gmail.com

<https://www.inkybeestampers.com>



1. Card Cuts:

- Card Base - Cut 1 Evening Evergreen cardstock to 8-1/2" x 5-1/2", score at 4-1/4"
- Mat - Cut 1 Basic White cardstock to 5-3/8" x 4-1/8"
- DSP Panel - Cut 1 Soft Succulent dot print from the 2021-2023 In Color Designer Series Paper to 5-1/4" x 4"
- DSP Tag - Die cut 1 tag using the die from the Celebrations Tag Dies set in Evening Evergreen plaid print from the 2021-2023 In Color DSP. Cut to approximately 6" x 2-1/2".
- Scraps of Basic White cardstock for stamping and die cutting mittens and sentiment label
- White Snowflakes - Using the Celebrations Tag Dies set, die cut 4 snowflakes from the Real Red & White 6" x 6" Glimmer Paper pack
- Inside Mat - Cut 1 Soft Succulent cardstock to 5-3/8" x 4-1/8"
- DSP Strip - Cut 1 coordinating piece of DSP to 4" x 1"
- Inside Panel - Cut 1 Basic White cardstock to 5-1/4" x 4"
- Envelope Flap - Cut 1 coordinating DSP to 6" x 2-1/2"

2. Using the mitten image from the Celebrate With Tags Stamp Set, stamp the image twice

Celebrate With Tags Christmas Card

Project Sheet - Nov 29 2022

Carol Buckalew

inkybeestampers@gmail.com

<https://www.inkybeestampers.com>

using Soft Succulent ink. Use the coordinating die from the Celebrations Tag Dies set to die cut the mittens.

3. Die cut 4 snowflakes using the snowflake die from the Celebrations Tag Dies set. Die cut from white glimmer paper.
4. Die cut the tag from the Celebrations Tag Dies set in Evening Evergreen plaid print from the 2021-2023 In Color 6" x 6" Designer Series Paper pack. Use a bone folder to burnish at the fold line. Adhere the die cut mittens to the front of the tag using liquid adhesive. Slightly overlap the mittens at the top. Adhere one white glimmer snowflake to the top left of the mittens/tag. Using a small piece of white twine from the Baker's Twine Essentials Pack, loop the twine through the punch out at the top of the tag. Adhere the decorated tag to the card front using Stampin' Dimensionals. Refer to photos for placement.
5. Using the Brightest Glow Stamp Set, stamp the sentiment "Tis the Season" in Evening Evergreen ink onto a scrap of white cardstock. Use the circle die from the Celebrations Tag Dies set to cut out. Adhere the sentiment label to the card front using Stampin' Dimensionals - to the right and center and slightly overlapping the tag.
6. Adhere the 3 remaining die cut snowflakes to the card front. Refer to photo for placement.
7. Tie a double bow using white twine and adhere to the top of the tag using a Mini Glue Dot. Adhere several Rhinestone Basic Jewels to the card front.
8. Stamp the additional sentiment "Merry Christmas" in Evening Evergreen ink onto the inside panel. Adhere a strip of the Evening Evergreen plaid DSP to the bottom of the inside panel, then adhere the panel to its Soft Succulent mat. Adhere this unit to the inside of the card.
9. Adhere a piece of coordinating DSP to the envelope flap and trim around the flap to finish off the envelope.

Celebrate With Tags Christmas Card

Project Sheet - Nov 29 2022

Carol Buckalew

inkybeestampers@gmail.com

<https://www.inkybeestampers.com>



How fun is the Celebrate With Tags Stamp Set and Celebrations Tag Dies? I love all of the options that this stamp and die set provide! The sentiments from the Brightest Glow Stamp Set can't be beat either! The fonts in this sentiment set are beautiful!

Products used to create this card are included on the next page.

Celebrate With Tags Christmas Card Project Sheet - Nov 29 2022

Carol Buckalew
inkybeestampers@gmail.com
<https://www.inkybeestampers.com>



Celebrate With Tags Bundle (English) - 159867

Price: \$55.75

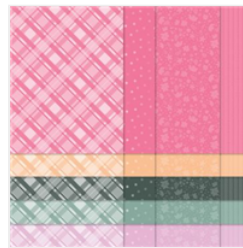
Add to Cart



Brightest Glow Cling Stamp Set (English) - 159542

Price: \$25.00

Add to Cart



2021-2023 In Color™ 6" X 6" (15.2 X 15.2 Cm) Designer Series Paper - 159254

Price: \$12.00

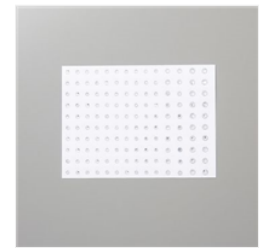
Add to Cart



Real Red & White 6" X 6" (15.2 X 15.2 Cm) Glimmer Paper - 159578

Price: \$5.00

Add to Cart



Rhinestone Basic Jewels - 144220

Price: \$6.00

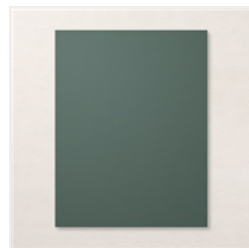
Add to Cart



Baker's Twine Essentials Pack - 155475

Price: \$11.00

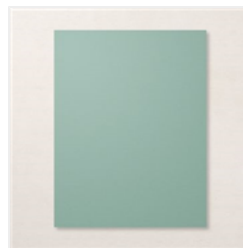
Add to Cart



Evening Evergreen 8-1/2" X 11" Cardstock - 155574

Price: \$9.25

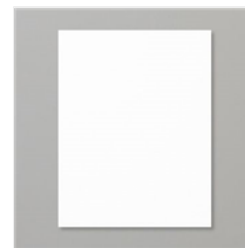
Add to Cart



Soft Succulent 8-1/2" X 11" Cardstock - 155776

Price: \$9.25

Add to Cart



Basic White 8-1/2" X 11" Cardstock - 159276

Price: \$10.25

Add to Cart



Basic White Medium Envelopes - 159236

Price: \$7.50

Add to Cart



Evening Evergreen Classic Stampin' Pad - 155576

Price: \$8.00

Add to Cart



Soft Succulent Classic Stampin' Pad - 155778

Price: \$8.00

Add to Cart



Multipurpose Liquid Glue - 110755

Price: \$4.00

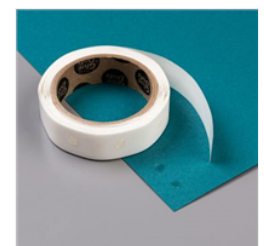
Add to Cart



Stampin' Dimensionals - 104430

Price: \$4.25

Add to Cart



Mini Glue Dots - 103683

Price: \$5.25

Add to Cart

Celebrate With Tags Christmas Card

Project Sheet - Nov 29 2022

Carol Buckalew

inkybeestampers@gmail.com

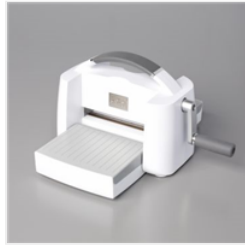
<https://www.inkybeestampers.com>



Paper Trimmer -
152392

Price: \$25.00

Add to Cart



Stampin' Cut &
Emboss Machine -
149653

Price: \$125.00

Add to Cart