

Merriest Moments Slimline Christmas Card

Project Sheet - Oct 20 2022

Carol Buckalew
inkybeestampers@gmail.com
<https://www.inkybeestampers.com>



I used the Merriest Moments Stamp Set and the Merriest Frames Hybrid Embossing Folder (dies come with this embossing folder) along with the gorgeous Boughs Of Holly 12" x 12" Designer Series Paper to create today's card. How fun is the 3-panel card adorned with red poinsettias, ribbon and some sparkle? Let's get started!

1. Card Cuts:

- Card Base - Cut 1 Cherry Cobbler cardstock to 8-1/2" x 7", score at 3-1/2"
- Mat - Cut 1 Basic White cardstock to 8-3/8" x 3-3/8"
- DSP Panel - Cut 1 Cherry Cobbler and Real Red pattern from the Boughs of Holly 12" x 12" Designer Series Paper to 8-1/4" x 3-1/4"
- White Squares - Cut 3 Basic White cardstock to 2" x 2"
- Mossy Meadow Squares - Cut 3 Mossy Meadow cardstock to 2-1/8" x 2-1/8"
- Scraps of Real Red and Garden Green cardstock to stamp and die cut poinsettias and greenery sprigs
- Inside Panel - Cut 1 Basic White cardstock to 8-3/8" x 3-3/8"
- Envelope Flap - Cut 1 coordinating piece of DSP to 4" x 1-1/2"

Merriest Moments Slimline Christmas Card

Project Sheet - Oct 20 2022

Carol Buckalew

inkybeestampers@gmail.com

<https://www.inkybeestampers.com>

- Using stamps from the Merriest Moments Stamp Set, stamp 2 medium and 2 large poinsettia leaves in Real Red ink onto Real Red cardstock. Die cut using coordinating dies from the Merriest Frames Dies set.
- Using the small greenery stamp from the Merriest Moments Stamp Set, stamp 2 in Garden Green ink onto Garden Green cardstock. Die cut using the coordinating die from the Merriest Frames Dies set.
- Adhere the DSP Panel to the Basic White cardstock mat, then adhere this unit to the card front.
- Adhere the 3 white squares to their Mossy Meadow mats.
- Cut a length of the green ribbon from the Real Red & Garden Green Ribbon Combo Pack to approximately 5-1/2". Determine the center of the card front, both horizontally and vertically. Adhere a piece of Tear & Tape to the card front and adhere the piece of ribbon to the Tear & Tape.



- Assemble the medium sized poinsettias to the large sized poinsettias. Adhere a die cut greenery sprig to each poinsettia unit, then adhere a poinsettia flower to a white square for each of the two flowers. You can gently curl the tips of the poinsettia petals to give them a more realistic look.
- On the third white square, stamp the sentiment "Joy" from the Merriest Moments Stamp Set in Mossy Meadow ink. Stamp in the center of the square.
- Adhere a poinsettia unit to each side of the card front using Stampin' Dimensionals - left and

Merriest Moments Slimline Christmas Card

Project Sheet - Oct 20 2022

Carol Buckalew

inkybeestampers@gmail.com

<https://www.inkybeestampers.com>

- right - and over top of the previously adhered ribbon. Adhere the sentiment label unit to the center of the card front, over top of the ribbon, using Stampin' Dimensionals.
- Using a Mossy Meadow Stampin' Blend, color 7 small Basic Rhinestone Jewels. Adhere 3 of the jewels to each of the centers of the Poinsettias and adhere one of the jewels to the sentiment label in the center of the letter "O".
 - Tie a small bow using Garden Green ribbon and adhere to the top of the sentiment label using a Mini Glue Dot.
 - On the white inside panel, stamp the sentiment "Thinking of you this festive season" in Mossy Meadow ink. Stamp the small greenery sprig multiple times in the lower right and upper left corners of the panel, also in Mossy Meadow ink, then adhere the panel to the inside of the card.
 - Stamp the same greenery onto the lower right front of the slimline envelope using Mossy Meadow ink.
 - Adhere the piece of coordinating DSP to the envelope flap and fussy cut around the flap to finish off the envelope.



I just love how this card turned out! The poinsettias are really festive, especially with the jewel centers and the ribbon adds some extra fun! I hope you'll give this slimline card a try!

Products used to create this card are included on the next page.

Merriest Moments Slimline Christmas Card

Carol Buckalew

inkybeestampers@gmail.com

<https://www.inkybeestampers.com>

Project Sheet - Oct 20 2022



Merriest Moments Photopolymer Stamp Set (English) - 156353

Price: \$22.00

Add to Cart



Merriest Frames Hybrid Embossing Folder - 156385

Price: \$39.00

Add to Cart



Boughs Of Holly 12" X 12" (30.5 X 30.5 Cm) Designer Series Paper - 159600

Price: \$12.00

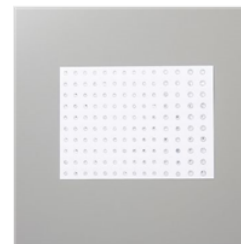
Add to Cart



Real Red & Garden Green 3/8" (1 Cm) Ribbon Combo Pack - 159577

Price: \$7.50

Add to Cart



Rhinestone Basic Jewels - 144220

Price: \$6.00

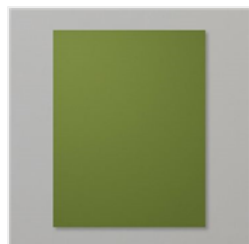
Add to Cart



Basic White 8-1/2" X 11" Cardstock - 159276

Price: \$10.25

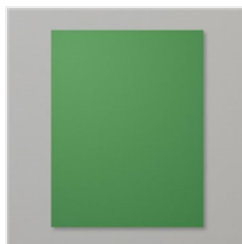
Add to Cart



Mossy Meadow 8-1/2" X 11" Cardstock - 133676

Price: \$9.25

Add to Cart



Garden Green 8-1/2" X 11" Cardstock - 102584

Price: \$9.25

Add to Cart



Cherry Cobbler 8-1/2" X 11" Cardstock - 119685

Price: \$9.25

Add to Cart



Real Red 8-1/2" X 11" Cardstock - 102482

Price: \$9.25

Add to Cart



Slimline Envelopes - 157981

Price: \$10.00

Add to Cart



Garden Green Classic Stampin' Pad - 147089

Price: \$8.00

Add to Cart



Real Red Classic Stampin' Pad - 147084

Price: \$8.00

Add to Cart



Mossy Meadow Classic Stampin' Pad - 147111

Price: \$8.00

Add to Cart



Mossy Meadow Stampin' Blends Combo Pack - 154890

Price: \$9.00

Add to Cart

Merriest Moments Slimline Christmas Card

Project Sheet - Oct 20 2022

Carol Buckalew

inkybeestampers@gmail.com

<https://www.inkybeestampers.com>



Multipurpose
Liquid Glue -
110755

Price: \$4.00

[Add to Cart](#)



Mini Glue Dots -
103683

Price: \$5.25

[Add to Cart](#)



Stampin'
Dimensionals -
104430

Price: \$4.25

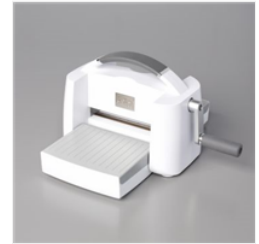
[Add to Cart](#)



Paper Trimmer -
152392

Price: \$25.00

[Add to Cart](#)



Stampin' Cut &
Emboss Machine -
149653

Price: \$125.00

[Add to Cart](#)