

Brightest Glow Christmas Card

Project Sheet - Oct 17 2022

Carol Buckalew

inkybeestampers@gmail.com

<https://www.inkybeestampers.com>



This simple but elegant Christmas card uses the Brightest Glow Stamp Set, Labels Aglow Dies and Real Red Glimmer Paper. The right and left margins on this card are wider than the top and bottom margins of a typical card for a different look. Let's get started.

1. Card Cuts:

- Card Base - Cut 1 Very Vanilla cardstock to 11" x 4-1/4", score at 5-1/2"
- Mat - Cut 1 Real Red 6" x 6" Glimmer Paper to 5-1/4" x 3-3/4"
- Panel - Cut 1 Very Vanilla cardstock to 5-1/8" x 3-5/8"
- Red Glimmer Circle - Cut 1 Real Red Glimmer Paper to 1-3/4" x 1-3/4"
- Very Vanilla Circle - Cut 1 Very Vanilla cardstock to 1-1/2" x 1-1/2"
- Sentiment Label - Cut 1 Very Vanilla cardstock to 3-3/4" x 3/4"
- Sentiment Label Mat - Cut 1 Real Red Glimmer Paper to 3-3/4" x 3/4"
- Inside Mat - Cut 1 Real Red cardstock to 5-1/4" x 3-3/4"
- Inside Panel - Cut 1 Very Vanilla cardstock to 5-1/8" x 3-5/8"
- Envelope Flap - Cut 1 Real Red Glimmer Paper to 6" x 2-1/2"

2. Using the large round die from the Labels Aglow Dies set, center the die onto one of the Very Vanilla panels. Position the die on the upper 2/3 of the panel and hold in place using

Brightest Glow Christmas Card

Project Sheet - Oct 17 2022

Carol Buckalew

inkybeestampers@gmail.com

<https://www.inkybeestampers.com>

Post It tape or Washi tape and die cut. Adhere this panel to the Real Red Glimmer Paper mat measuring 5-1/4" x 3-3/4", then adhere this unit to the card front.

3. Using the Labels Aglow Dies set, die cut the following:
 - Use the small circle die and cut a circle using the 1-3/4" x 1-3/4" Real Red Glimmer Paper
 - Using the second smallest die from the Layering Circles Dies, place the snowflake die in the center of the circle and hold with Post It or Washi tape, then die cut in Very Vanilla cardstock to produce a circle with a snowflake pattern in the center.
4. From Step #3 above, adhere the Very Vanilla circle to the Real Red Glimmer Paper circle. Use Stampin' Dimensionals to adhere this unit to the center of the die cut pattern on the card front
5. Using the Brightest Glow Stamp Set, stamp the sentiment "to you and yours this Christmas" onto the Very Vanilla sentiment label and die cut using the label die from the Labels Aglow Dies set. Adhere the sentiment label to the strip of Real Red Glimmer Paper measuring 3-3/4" x 3/4". Using scissors or paper snips, trim around the label leaving a slight reveal of the Real Red Glimmer Paper. Adhere the sentiment label below the die cut patterns on the card front using Stampin' Dimensionals.
6. Using the Brightest Glow Stamp Set, stamp the sentiment "May the peace of the season light your world & may your new year be the brightest" onto the Very Vanilla inside panel. Use the large snowflake die from the Labels Aglow Dies set to die cut a snowflake in the lower right of this panel. Adhere the Very Vanilla panel to the Real Red cardstock mat, then adhere this unit to the inside of the card.
7. Adhere the Real Red Glimmer Paper piece to the envelope flap and fussy cut around the flap.
8. Using a length of Satin Edged Ribbon, tie a bow and adhere the bow to the top of the circles on the card front using a Mini Glue Dot.
9. Place several Red Rhinestone Basic Jewels to the card front.

Brightest Glow Christmas Card

Project Sheet - Oct 17 2022

Carol Buckalew

inkybeestampers@gmail.com

<https://www.inkybeestampers.com>



The Very Vanilla cardstock combined with the Real Red Glimmer Paper makes for a pretty card! The 6" x 6" Glimmer Paper comes in both Real Red and White. I could see this same card using the White Glimmer Paper against a darker cardstock, such as Night of Navy or Evening Evergreen for a different look, using white embossing powder for the sentiment.

Products used to create this card are included on the next page.

Brightest Glow Christmas Card

Project Sheet - Oct 17 2022

Carol Buckalew
inkybeestampers@gmail.com
<https://www.inkybeestampers.com>



Brightest Glow Bundle (English) - 159552

Price: \$52.00

[Add to Cart](#)



Real Red & White 6" X 6" (15.2 X 15.2 Cm) Glimmer Paper - 159578

Price: \$5.00

[Add to Cart](#)



Layering Circles Dies - 151770

Price: \$35.00

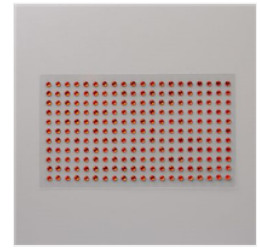
[Add to Cart](#)



Gold & Vanilla 3/8" (1 Cm) Satin Edged Ribbon - 159555

Price: \$8.00

[Add to Cart](#)



Red Rhinestone Basic Jewels - 146924

Price: \$7.00

[Add to Cart](#)



Very Vanilla 8-1/2" X 11" Cardstock - 101650

Price: \$10.25

[Add to Cart](#)



Real Red 8-1/2" X 11" Cardstock - 102482

Price: \$9.25

[Add to Cart](#)



Very Vanilla Medium Envelopes - 107300

Price: \$7.50

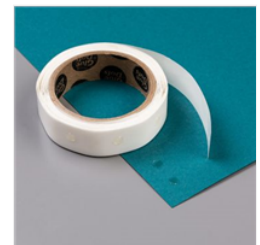
[Add to Cart](#)



Real Red Classic Stampin' Pad - 147084

Price: \$8.00

[Add to Cart](#)



Mini Glue Dots - 103683

Price: \$5.25

[Add to Cart](#)



Multipurpose Liquid Glue - 110755

Price: \$4.00

[Add to Cart](#)



Stampin' Dimensionals - 104430

Price: \$4.25

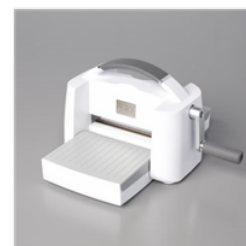
[Add to Cart](#)



Paper Trimmer - 152392

Price: \$25.00

[Add to Cart](#)



Stampin' Cut & Emboss Machine - 149653

Price: \$125.00

[Add to Cart](#)