

Spruced Up Holiday Card

Project Sheet - Aug 5 2022

Carol Buckalew

inkybeestampers@gmail.com

<https://www.inkybeestampers.com>



Today's card was created using the Spruced Up Stamp Set, Spruced Up Outlines Dies, the Lights Aglow 6" x 6" Specialty Designer Series Paper, and the Real Red & White 6" x 6" Glimmer Paper. I love some sparkle on holiday cards! How about you?

1. Card Cuts:

- Card Base - Cut 1 Thick Basic White cardstock to 8-1/2" x 5-1/2", score at 4-1/4"
- Panel - Cut 1 Lights Aglow Specialty DSP (black Bokeh pattern) to 5-3/8" x 4-1/8"
- Real Red & White Glimmer Paper for die cuts
- Inside Panel - Cut 1 Basic White cardstock to 5-1/4" x 4"
- Inside Mat - Cut 1 Real Red cardstock to 5-3/8" x 4-1/8"
- Envelope - Cut 1 coordinating Lights Aglow Specialty DSP to 6" x 2-3/4"

2. Start by die cutting the following

- 1 circle in red glimmer paper using the 2nd to largest circle from the Layering Circles Dies
- 1 small tree in red glimmer paper using the small tree die from the Spruced Up Outlines Dies
- 1 large tree in white glimmer paper using the large tree die from the Spruced Up

Spruced Up Holiday Card

Project Sheet - Aug 5 2022

Carol Buckalew

inkybeestampers@gmail.com

<https://www.inkybeestampers.com>

Outlines Dies

3. Adhere a length of Real Red ribbon vertically to the left side of the Lights Aglow black bokeh panel. Adhere the ribbon ends on the back side of the panel using Stampin' Seal. Color the ribbon using Wink of Stella for extra sparkle! I placed the ribbon on the left of the panel approximately 1-1/2" from the left side.
4. Adhere 1 of the Wonderful Snowflakes to the die cut circle using small drops of glue. Adhere this unit to the card panel, over top of the ribbon towards the top of the panel.
5. Arrange then adhere the solid red tree, the outline red tree and the white solid tree on the panel on the right towards the bottom. Adhere the two red trees to the panel using glue. Adhere the white tree using Stampin' Dimensionals and slightly overlapping the red trees.
6. Stamp the sentiment "Merry Wishes" from the Window Wishes Stamp Set in Tuxedo Black Memento ink onto a scrap of white cardstock. Trim the sentiment label down to approximately 1/2" x 2" and cut a banner end on the right side of the label. Adhere the label using Stampin' Dimensionals to the panel towards the left bottom.
7. Adhere the panel to the card front and place Red Rhinestone Basic Jewels to the card front.
8. Stamp the sentiment "From our hearts to yours" on the inside white panel in Tuxedo Black Memento ink. Stamp one of the trees from the Spruced Up Stamp Set in Real Red ink on the inside panel. Adhere the inside white panel to its Real Red mat, then adhere this unit to the inside of the card.
9. Using the same tree stamp as in Step #8 above, stamp the tree on the envelope front using Real Red ink.
10. Adhere the coordinating Lights Aglow Specialty DSP to the envelope flap and fussy cut around the flap to finish off the envelope.

Spruced Up Holiday Card

Project Sheet - Aug 5 2022

Carol Buckalew

inkybeestampers@gmail.com

<https://www.inkybeestampers.com>



Unfortunately my camera is not accurately capturing this card correctly but in-person there is lots of sparkle to be had on this card! The red and white really pop on the black background. I hope you'll give it a try!

Products used to create this card are included on the next page.

Spruced Up Holiday Card

Project Sheet - Aug 5 2022

Carol Buckalew

inkybeestampers@gmail.com

<https://www.inkybeestampers.com>



Spruced Up Bundle (English) - 159701

Price: \$45.00

Add to Cart



Window Wishes Photopolymer Stamp Set (English) - 159751

Price: \$22.00

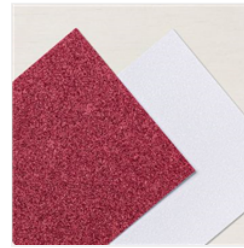
Add to Cart



Lights Aglow 6" X 6" (15.2 X 15.2 Cm) Specialty Designer Series Paper - 159535

Price: \$15.00

Add to Cart



Real Red & White 6" X 6" (15.2 X 15.2 Cm) Glimmer Paper - 159578

Price: \$5.00

Add to Cart



Wonderful Snowflakes - 156340

Price: \$6.00

Add to Cart



Layering Circles Dies - 151770

Price: \$35.00

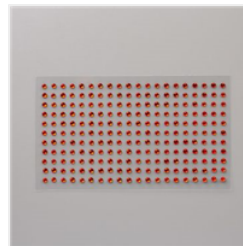
Add to Cart



Real Red & Garden Green 3/8" (1 Cm) Ribbon Combo Pack - 159577

Price: \$7.50

Add to Cart



Red Rhinestone Basic Jewels - 146924

Price: \$7.00

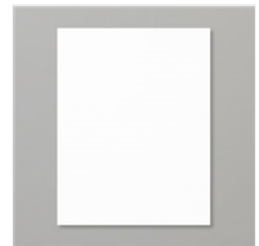
Add to Cart



Wink Of Stella Clear Glitter Brush - 141897

Price: \$8.00

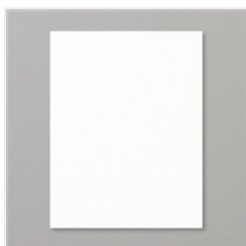
Add to Cart



Basic White 8-1/2" X 11" Thick Cardstock - 159229

Price: \$8.75

Add to Cart



Basic White 8-1/2" X 11" Cardstock - 159276

Price: \$10.25

Add to Cart



Real Red 8-1/2" X 11" Cardstock - 102482

Price: \$9.25

Add to Cart



Basic White Medium Envelopes - 159236

Price: \$7.50

Add to Cart



Tuxedo Black Memento Ink Pad - 132708

Price: \$6.00

Add to Cart



Real Red Classic Stampin' Pad - 147084

Price: \$8.00

Add to Cart

Spruced Up Holiday Card

Project Sheet - Aug 5 2022

Carol Buckalew

inkybeestampers@gmail.com

<https://www.inkybeestampers.com>



Stampin' Seal -
152813

Price: \$8.00

Add to Cart



Multipurpose
Liquid Glue -
110755

Price: \$4.00

Add to Cart



Stampin'
Dimensionals -
104430

Price: \$4.25

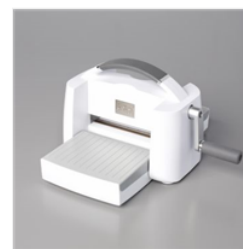
Add to Cart



Paper Trimmer -
152392

Price: \$25.00

Add to Cart



Stampin' Cut &
Emboss Machine -
149653

Price: \$125.00

Add to Cart