

# Best Witches Happy Halloween Card

Project Sheet - Aug 2 2022

Carol Buckalew

[inkybeestampers@gmail.com](mailto:inkybeestampers@gmail.com)

<https://www.inkybeestampers.com>



I used the **Best Witches Stamp Set** along with the **Black & White Designs 12" x 12" Designer Series Paper** to make this card. I also used the image of the tree stump from the **Happier Than Happy Stamp Set** on this card...our little frog needed something to sit on!

**I used a lot of different colors of Stampin' Blends to color the images on this card project, but use what you have - markers, or watercolor pencils would work just as well!**

## 1. Card Cuts:

- Card Base - Cut 1 Gorgeous Grape cardstock to 8-1/2" x 5-1/2", score at 4-1/4"
- DSP Mat - Cut 1 gray and white striped pattern from the Black & White DSP to 5-3/8" x 4-1/8"
- Panel - Cut 1 Basic White cardstock to 4-3/4" x 3-1/2"
- Mat for White Panel - Cut 1 Pumpkin Pie cardstock to 4-7/8" x 3-5/8"
- Inside Panel - Cut 1 Basic White cardstock to 5-3/8" x 4-1/8"
- Envelope Flap - Cut 1 coordinating DSP to 6" x 2-3/4"

2. Start by stamping the image of the witch and cauldron from the Best Witches Stamp Set in Tuxedo Black Memento ink onto the 4-3/4" x 3-1/2" white panel. Stamp the witch to the left

# Best Witches Happy Halloween Card

Project Sheet - Aug 2 2022

Carol Buckalew

[inkybeestampers@gmail.com](mailto:inkybeestampers@gmail.com)

<https://www.inkybeestampers.com>

of the panel.

3. Stamp the image of the tree stump from the Happier Than Happy Stamp Set in Gray Granite ink on the right side of the white panel. Stamp the frog from the Best Witches Stamp Set on top of the tree stump in Tuxedo Black Memento ink. **Note: I used a black Stampin' Write marker to outline the stamped tree stump and made several lines on the base of the tree stump to indicate the wood grain. I drew several small "C" shapes on top of the tree stump to indicate tree rings. Less is more here!**
4. From the Best Witches Stamp Set, stamp the sentiment "You've put a spell on me" in Tuxedo Black Memento ink in the upper right of the white panel. Next, using the stars image from the same stamp set, stamp stars around the witch and sentiment in Daffodil Delight ink. I stamped the stars about 1/2 way down the white panel.
5. Using Stampin' Blends, color the following:
  - Witch Hat - Use Gray Granite to color in the hat. Come back with the darker shade to darken the sides and under the hat band, then blend with the lighter shade.
  - Band on Witch's Hat - Color using dark shade of Highland Heather
  - Buckle on Witch's Hat - Color using dark shade of Daffodil Delight, then use Wink of Stella to add a little glimmer
  - Witch's Hair - Color using light shade of Daffodil Delight
  - Witch's Dress - Color using light and dark shades of Highland Heather
  - Cauldron - Color using Gray Granite
  - Wood under Flames - Color using Crumb Cake
  - Flames - Color using Daffodil Delight, then use Pumpkin Pie at the base of the flames and blend with Daffodil Delight
  - Cauldron Bubbles - Color with the light shade of Pool Party
  - Witch's Face and hands - Color using light shade of Petal Pink
  - Frog - Color using light and dark shades of Parakeet Party
  - Color the ground last using the light shade of Pool Party. Note: Use a piece of Washi tape or Post It Notes to mask off the ground in a horizontal line then color with the Light Shade of Pool Party, working around all of the already colored images. **Caution: If using Washi tape, first adhere the tape to a piece of clothing or your skin before applying to the white panel...otherwise the tape may lift some of the paper when removing.**
  - Color in a few of the stars with Daffodil Delight, then use Wink of Stella to color in the remaining stars or dot Wink of Stella on the dotted stars.
6. Adhere the completed, stamped white panel to its Pumpkin Pie mat.
7. Adhere the large DSP mat to the card front, then use Stampin' Dimensionals to adhere the stamped unit to the card front.
8. Use several green Festive Pearls as the cauldron bubbles. I used three.
9. For the inside white panel and envelope front, repeat stamping of the tree stump, frog and stars using the same colors as indicated above. Use a black Stampin' Write marker to

# Best Witches Happy Halloween Card

Project Sheet - Aug 2 2022

Carol Buckalew

[inkybeestampers@gmail.com](mailto:inkybeestampers@gmail.com)

<https://www.inkybeestampers.com>

outline the tree stamp as before. I stamped the tree stump, frog and stars on the lower right front of the envelope and the lower right corner of the inside panel. Use Wink of Stella to color the stars as you did for the front panel.

10. Adhere the inside panel to the inside of the card base.

11. Adhere the piece of coordinating DSP to the envelope flap and fussy cut around the flap to finish off the envelope.

The card is complete! Did the witch put a spell on the frog? Or was he a person and she turned him into a frog? I'll let you decide! :)

Products used to create this card are included on the next page.

# Best Witches Happy Halloween Card

Carol Buckalew

[inkybeestampers@gmail.com](mailto:inkybeestampers@gmail.com)

<https://www.inkybeestampers.com>

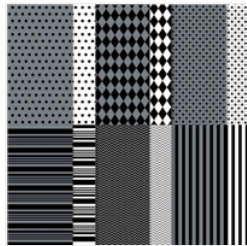
## Project Sheet - Aug 2 2022



Best Witches Cling Stamp Set (English) - 159860

Price: \$21.00

Add to Cart



Black & White Designs 12" X 12" (30.5 X 30.5 Cm) Designer Series Paper - 159861

Price: \$12.00

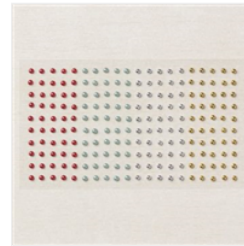
Add to Cart



Happier Than Happy Cling Stamp Set (English) - 158944

Price: \$24.00

Add to Cart



Festive Pearls - 159963

Price: \$7.00

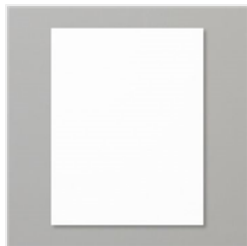
Add to Cart



Wink Of Stella Clear Glitter Brush - 141897

Price: \$8.00

Add to Cart



Basic White 8-1/2" X 11" Cardstock - 159276

Price: \$10.25

Add to Cart



Pumpkin Pie 8-1/2" X 11" Cardstock - 105117

Price: \$9.25

Add to Cart



Gorgeous Grape 8-1/2" X 11" Cardstock - 146987

Price: \$9.25

Add to Cart



Tuxedo Black Memento Ink Pad - 132708

Price: \$6.00

Add to Cart



Daffodil Delight Classic Stampin' Pad - 147094

Price: \$8.00

Add to Cart



Gray Granite Classic Stampin' Pad - 147118

Price: \$8.00

Add to Cart



Parakeet Party Stampin' Blends Combo Pack - 159220

Price: \$9.00

Add to Cart



Crumb Cake Stampin' Blends Combo Pack - 154882

Price: \$9.00

Add to Cart



Petal Pink Stampin' Blends Combo Pack - 154893

Price: \$9.00

Add to Cart



Highland Heather Stampin' Blends Combo Pack - 154887

Price: \$9.00

Add to Cart

# Best Witches Happy Halloween Card

Project Sheet - Aug 2 2022

Carol Buckalew

[inkybeestampers@gmail.com](mailto:inkybeestampers@gmail.com)

<https://www.inkybeestampers.com>



Gray Granite  
Stampin' Blends  
Combo Pack -  
154886

Price: \$9.00

Add to Cart



Pool Party  
Stampin' Blends  
Combo Pack -  
154894

Price: \$9.00

Add to Cart



Daffodil Delight  
Stampin' Blends  
Combo Pack -  
154883

Price: \$9.00

Add to Cart



Pumpkin Pie  
Stampin' Blends  
Combo Pack -  
154897

Price: \$9.00

Add to Cart



Multipurpose  
Liquid Glue -  
110755

Price: \$4.00

Add to Cart



Stampin'  
Dimensionals -  
104430

Price: \$4.25

Add to Cart



Paper Trimmer -  
152392

Price: \$25.00

Add to Cart