

Hello Harvest & Rings of Love Friendship Card

Project Sheet - Aug 1 2022

Carol Buckalew
inkybeestampers@gmail.com
<https://www.inkybeestampers.com>



For today's card I paired the Hello Harvest Stamp Set, Rustic Pumpkin Dies, and a piece of the Rings of Love 12 x 12 Designer Series Paper to create this Fall themed friendship card. The Rings of Love DSP is a Sale-A-Bration item that you can get with a qualifying order through August 31, or while supplies last!

1. Card Cuts:

- Card Base - Cut 1 Pumpkin Pie cardstock to 11" x 4-1/4", score at 5-1/2"
- Panel - Cut 1 Cherry Cobbler cardstock to approximately 4-3/4" x 3-1/4" (for embossing then die cutting)
- Rings of Love DSP - Cut 1 to 5-3/8" x 4-1/8"
- Scraps of White for stamping and die cutting leaves and pumpkin
- Inside Panel - Cut 1 Basic White cardstock to 5-3/8" x 4-1/8"
- DSP Strip for Inside Panel - Cut 1 to 5-3/8" x 3/4"
- Envelope Flap - Cut 1 coordinating DSP to 6" x 2-3/4"

2. Use the Leaf Fall 3D Embossing Folder to emboss the Cherry Cobbler panel. Then, use the 3rd largest die from the Deckled Rectangles Dies to die cut the embossed panel.

Hello Harvest & Rings of Love Friendship Card

Project Sheet - Aug 1 2022

Carol Buckalew

inkybeestampers@gmail.com

<https://www.inkybeestampers.com>

3. Adhere the Rings of Love DSP Panel to the card front, then adhere the Cherry Cobbler embossed and die cut panel on top of the DSP, placing towards the top of the card. I left about a 1/2" between the top of the card and the top of the Cherry Cobbler panel.
4. Using the leaf stamp from the Hello Harvest Stamp Set, stamp three leaves in Cherry Cobbler ink and three leaves in Crushed Curry ink.
5. Using the pumpkin stamp from the Hello Harvest Stamp Set, stamp the pumpkin in Tuxedo Black Memento ink. Use Stampin' Blends in Pumpkin Pie and Mossy Meadow to color in the pumpkin.
6. Using coordinating dies from the Rustic Pumpkin Dies set, die cut the leaves and the pumpkin.
7. Dry fit the leaves and pumpkin onto the card front, towards the top of the Cherry Cobbler embossed panel. Once happy with the arrangement, begin gluing down the leaves to the Cherry Cobbler embossed panel. Use Stampin' Dimensionals to adhere the pumpkin to the card front, slightly overlapping the leaves. When placing the leaves, I let a few of them overhang the Cherry Cobbler panel.
8. Stamp the sentiment from the Hello Harvest Stamp Set in Cherry Cobbler ink onto Crushed Curry cardstock. Use the coordinating die from the Rustic Pumpkin Dies to die cut the sentiment label. Adhere the sentiment label to the card front using Stampin' Dimensionals. The sentiment label slightly overlaps the bottom of the Cherry Cobbler embossed panel.
9. Adhere the thin strip of coordinating DSP to the right edge of the white inside panel. Adhere the remaining die cut leaf to overlap the DSP strip. Adhere the inside panel to the inside of the card.
10. Tie a small bow using twine from the Baker's Twine Essentials Pack and adhere to the top of the pumpkin, at the stem, using a Mini Glue Dot.
11. Adhere the piece of coordinating DSP to the envelope flap then fussy cut around the flap.
12. For the front of the envelope, stamp several leaves on the envelope front in Cherry Cobbler and Crushed Curry.

Hello Harvest & Rings of Love Friendship Card

Project Sheet - Aug 1 2022

Carol Buckalew
inkybeestampers@gmail.com
<https://www.inkybeestampers.com>



This completes today's card! I just love Fall and I hope you enjoy this Fall themed friendship card!

Products used to complete this card are included on the next page.

Hello Harvest & Rings of Love Friendship Card

Project Sheet - Aug 1 2022

Carol Buckalew

inkybeestampers@gmail.com

<https://www.inkybeestampers.com>



Hello Harvest
Bundle (English) -
159644

Price: \$49.50

Add to Cart



Rings Of Love 12"
X 12" (30.5 X 30.5
Cm) Designer
Series Paper -
159939

Price: \$0.00

Add to Cart



Leaf Fall 3D
Embossing Folder
- 159847

Price: \$10.00

Add to Cart



Deckled
Rectangles Dies -
159173

Price: \$30.00

Add to Cart



Baker's Twine
Essentials Pack -
155475

Price: \$11.00

Add to Cart



Pumpkin Pie 8-1/2"
X 11" Cardstock -
105117

Price: \$9.25

Add to Cart



Cherry Cobbler 8-
1/2" X 11"
Cardstock -
119685

Price: \$9.25

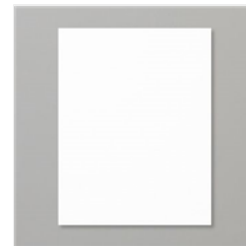
Add to Cart



Crushed Curry 8-
1/2" X 11"
Cardstock -
131199

Price: \$9.25

Add to Cart



Basic White 8-1/2"
X 11" Cardstock -
159276

Price: \$10.25

Add to Cart



Basic White
Medium Envelopes
- 159236

Price: \$7.50

Add to Cart



Crushed Curry
Classic Stampin'
Pad - 147087

Price: \$8.00

Add to Cart



Cherry Cobbler
Classic Stampin'
Pad - 147083

Price: \$8.00

Add to Cart



Pumpkin Pie
Stampin' Blends
Combo Pack -
154897

Price: \$9.00

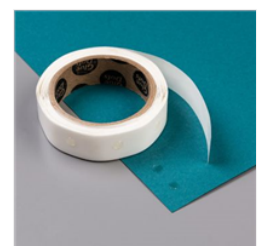
Add to Cart



Mossy Meadow
Stampin' Blends
Combo Pack -
154890

Price: \$9.00

Add to Cart



Mini Glue Dots -
103683

Price: \$5.25

Add to Cart

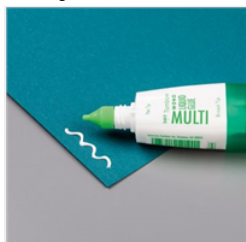
Hello Harvest & Rings of Love Friendship Card

Project Sheet - Aug 1 2022

Carol Buckalew

inkybeestampers@gmail.com

<https://www.inkybeestampers.com>



Multipurpose
Liquid Glue -
110755

Price: \$4.00

Add to Cart



Stampin'
Dimensionals -
104430

Price: \$4.25

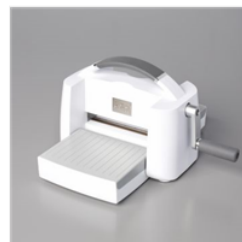
Add to Cart



Paper Trimmer -
152392

Price: \$25.00

Add to Cart



Stampin' Cut &
Emboss Machine -
149653

Price: \$125.00

Add to Cart